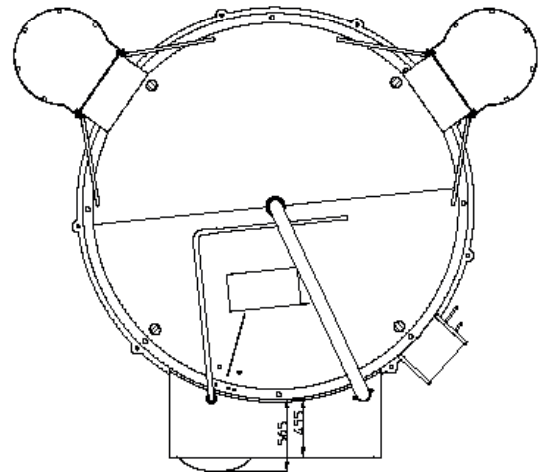
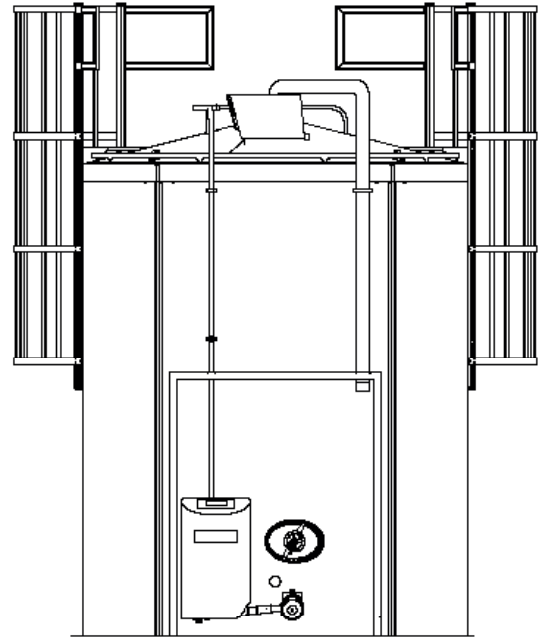
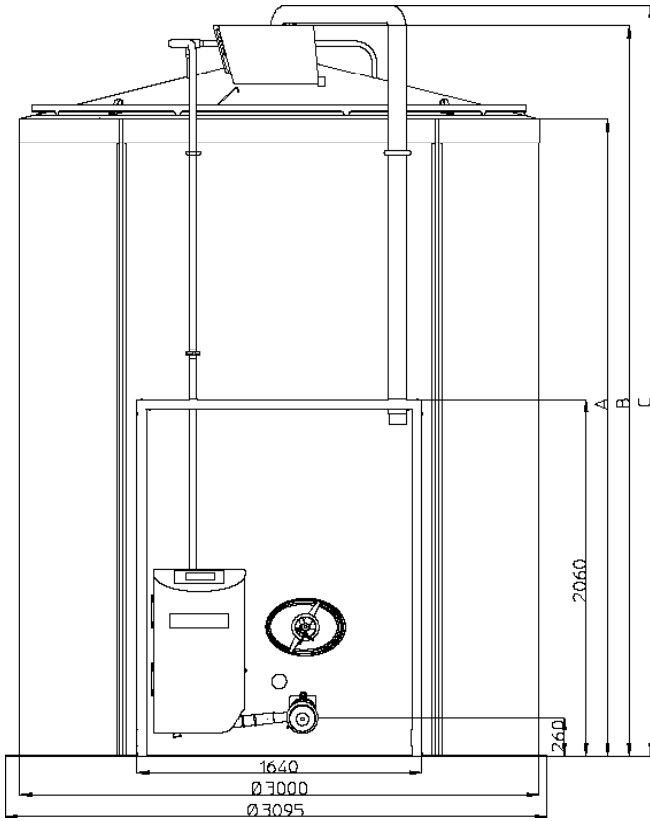


BLOOD COOLING TANK WITH INDIRECT COOLING

VM/DIB 12000 - 50000 L



9 fixation holes, Ø 25 mm, evenly spread over the circumference (9 x 40 °)

Dimensions VM/DIB

Model	Max. volume	A	B	C	Weight with control unit and alcove	Weight without control unit and alcove
VMDIB	litres	mm	mm	mm	kg	kg
12000	13117	2315	2730	3040	1993	1770
15000	16618	2845	3385	3695	2103	1880
18000	19082	3220	3755	4065	2213	1990
21000	22153	3685	4220	4530	2343	2120
25000	26282	4310	4845	5155	2463	2240
30000	31480	5095	5630	5940	2738	2515
35000	36599	5865	6410	6720	2953	2730
40000		6647	7192	7502	3203	2913
50000		8202	8747	9057	3453	3163

Fullwood Packo nv

Torhoutsesteenweg 154 - 8210 Zedelgem - Belgium

T +32 50 25 06 10 - E cooling@fullwoodpacko.com - www.packocooling.com - www.packoindustry.com

Subject to modifications. Not contractually binding document.