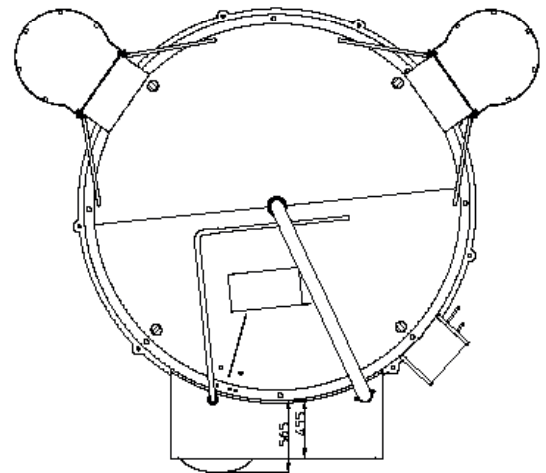
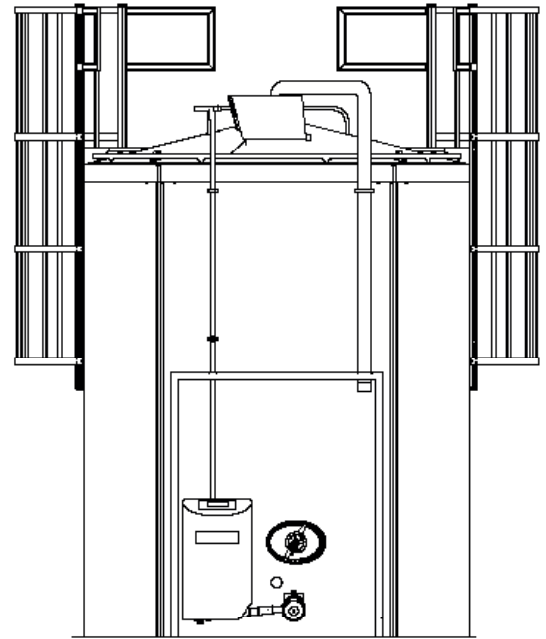
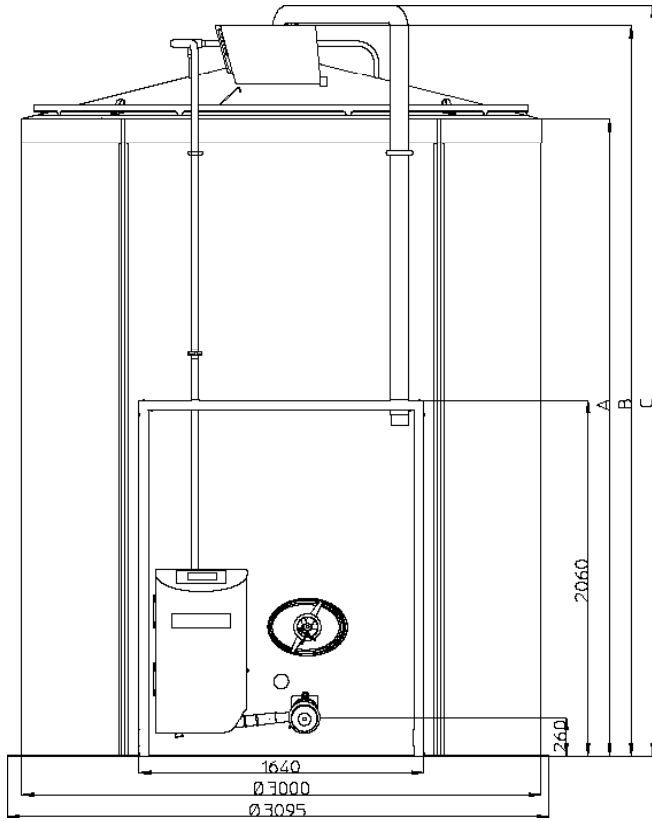


BLOOD COOLING TANK WITH DIRECT EXPANSION

VM/DX 12000 - 50000 L



9 fixation holes, Ø 25 mm, evenly spread over the circumference (9 x 40 °)

Dimensions VM/DX

Model	Max. volume	A	B	C	Weight with control unit and alcove	Weight without control unit and alcove
VMDX	litres	mm	mm	mm	kg	kg
12000	13117	2315	2730	3040	2043	1820
15000	16618	2845	3385	3695	2153	1930
18000	19082	3220	3755	4065	2263	2040
21000	22153	3685	4220	4530	2393	2170
25000	26282	4310	4845	5155	2543	2320
30000	31480	5095	5630	5940	2818	2595
35000	36599	5865	6410	6720	3033	2810
40000		6647	7192	7502	3203	2913
50000		8202	8747	9057	3453	3163

Fullwood Packo nv

Torhoutsesteenweg 154 - 8210 Zedelgem - Belgium

T +32 50 25 06 10 - E cooling@fullwoodpacko.com - www.packocooling.com - www.packoindustry.com

Subject to modifications. Not contractually binding document.